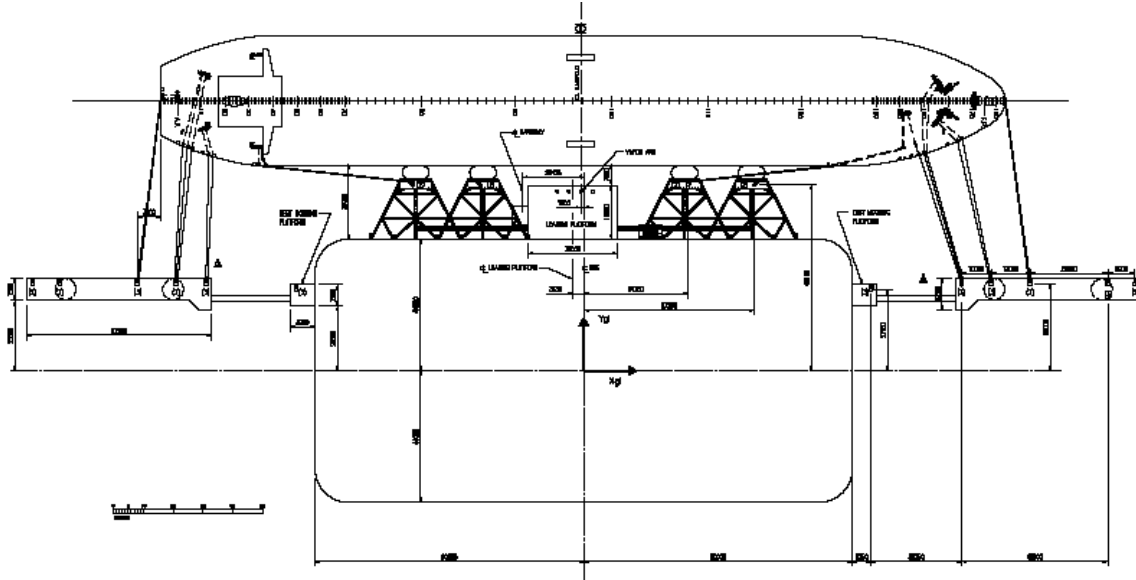


Annex (n)

Description of berthing facilities

Adriatic LNG Terminal – Berthing structures

- 138.000-152.000 cubic meter LNG Tanker (*Membranes*)



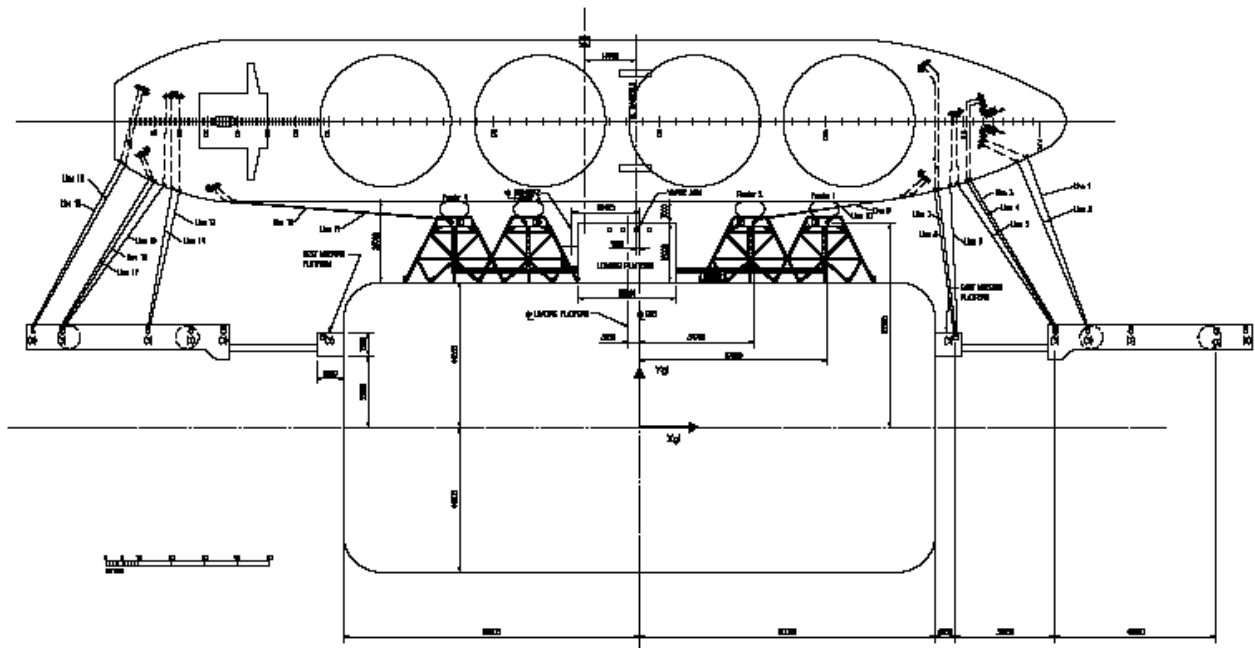
Mooring Lines	HS1	HS2	HS3	HS4	HS5	HS6	HS7	HS8
Hook	1 2	1 2 3	1 2 3	1 2 3	1 2 3	1 2 3	1 2	1 2
Head/Stern			18 17					
Breast				16 15 14	13 12			
Spring							11 10	

Mooring Lines	HS9	HS10	HS11	HS12	HS13	HS14	HS15	HS16
Hook	1 2	1 2	1 2 3	1 2 3	1 2 3	1 2 3	1 2 3	1 2
Head/Stern								
Breast				7 6 5 4 3				
Spring	9 8					2 1		

Lines	Forward	Aft
Head/Stern	2	2
Breast	5	5
Spring	2	2
Total Lines:	18	

Courtesy translation, not binding.

- 145.000 cubic meter LNG Tanker (Spherical)



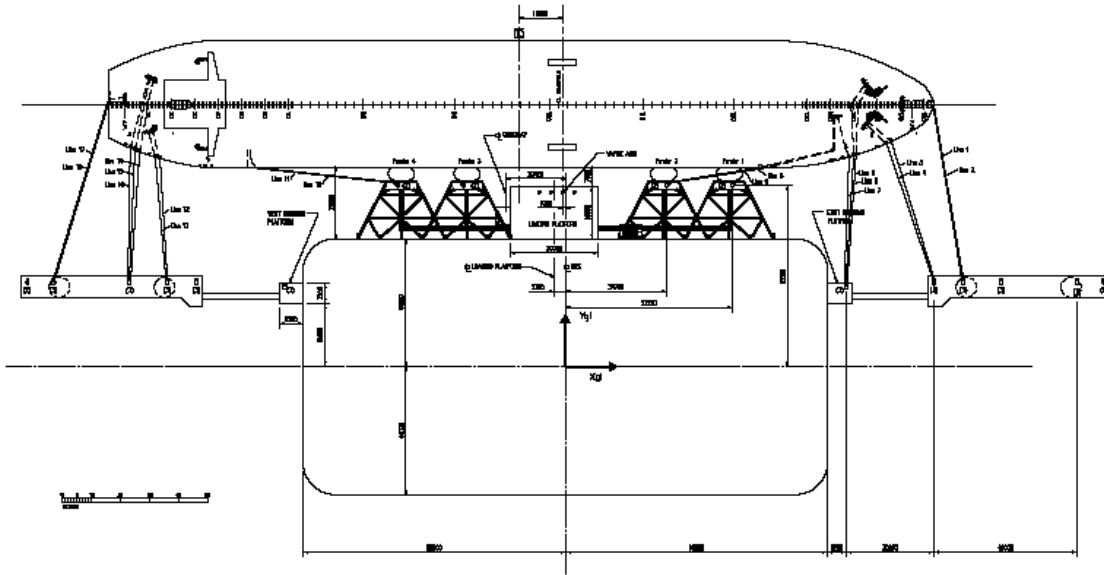
Mooring Lines	HS1		HS2			HS3			HS4			HS5			HS6			HS7		HS8	
Hook	1	2	1	2	3	1	2	3	1	2	3	1	2	3	1	2	3	1	2	1	2
Head/Stern	19		18																		
Breast			17		16		15		14		13										
Spring																	12		11		

Mooring Lines	HS9		HS10		HS11			HS12			HS13			HS14			HS15			HS16		
Hook	1	2	1	2	1	2	3	1	2	3	1	2	3	1	2	3	1	2	3	1	2	
Head/Stern											2		1									
Breast					8		7		6		5		4		3							
Spring	10		9																			

Lines	Forward	Aft
Head/Stern	2	2
Breast	6	5
Spring	2	2
Total Lines:	19	

Courtesy translation, not binding.

- 138.000-152.000 cubic meter LNG Tanker with one loading arm (15metri offset).



Mooring Lines	HS1		HS2		HS3			HS4			HS5			HS6			HS7		HS8		
Hook	1	2	1	2	3	1	2	3	1	2	3	1	2	3	1	2	3	1	2	1	2
Head/Stern					18	17															
Breast							16	15	14			13	12								
Spring																	11	10			

Mooring Lines	HS9		HS10		HS11			HS12			HS13			HS14			HS15			HS16	
Hook	1	2	1	2	1	2	3	1	2	3	1	2	3	1	2	3	1	2	3	1	2
Head/Stern										2	1										
Breast					7	6	5		4	3											
Spring	9	8																			

Lines	Forward	Aft
Head/Stern	2	2
Breast	5	5
Spring	2	2
Total Lines:	18	